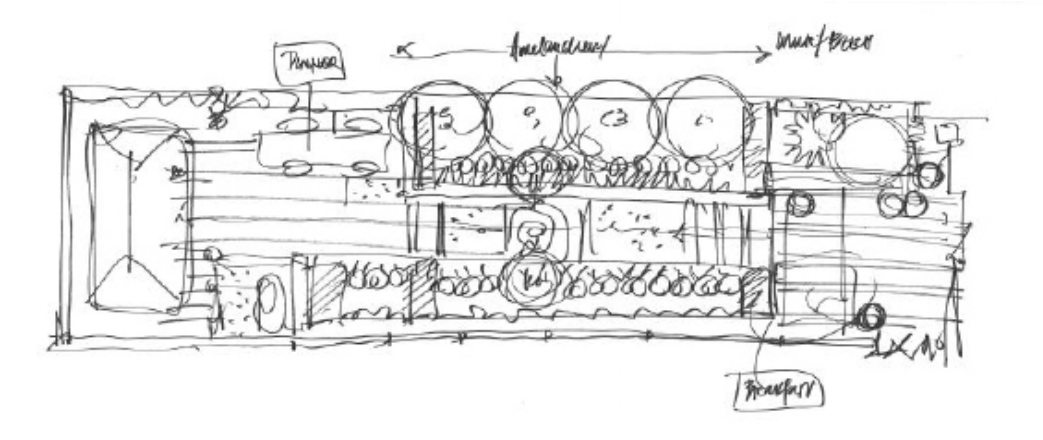


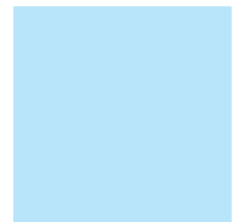
PETER SHEARD CMLI

P O R T F O L I O

LANDSCAPE ARCHITECT

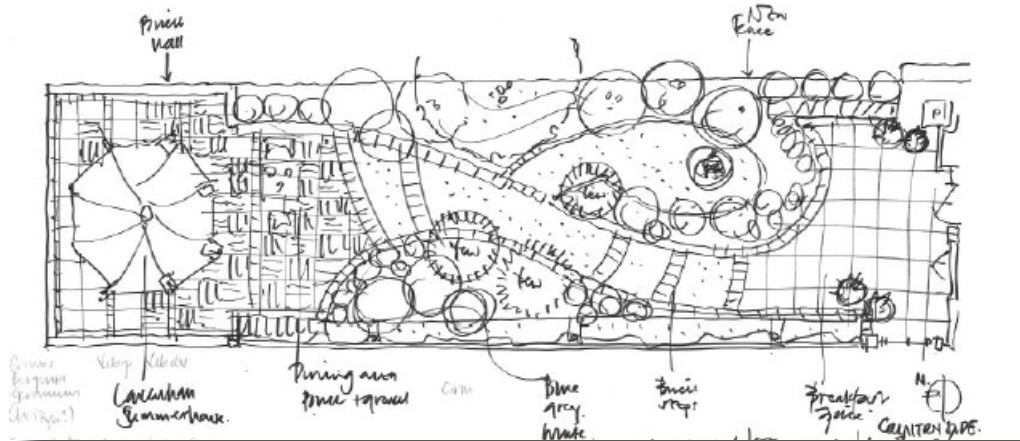


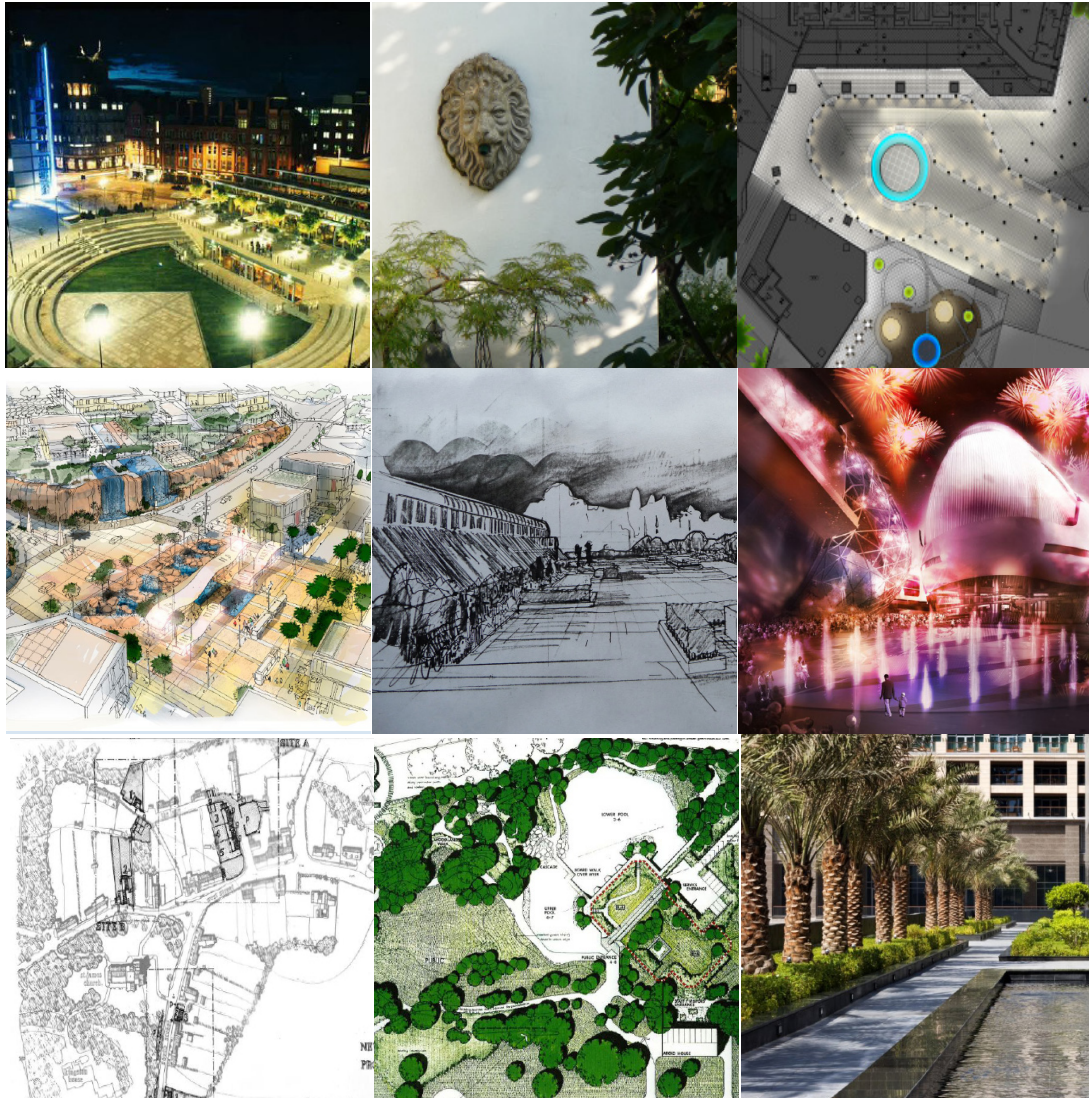
introduction	1
expertise	2
planning	3
landscape	4
gardens	5
writing	6
history	7



introduction 1

I am a fully qualified landscape architect with over thirty years experience in some of the world's leading multi disciplinary practices which has given me a depth of understanding of my chosen profession, as well as urban design and master planning. I can design conceptually at a number of scales from small landscape plots to large demanding sites with complex briefs and conditions. I understand development in both its environmental and commercial complexities, and can work with authority with a range of other disciplines such as architects, interior designers, ecologists, branding and graphics advisors; cost consultants; and project managers. Previous clients include some of the largest developers in Europe and the UK, as well as local authorities and financial institutions.





expertise

2

Gensler, London.

- 8/2000 - 6/2001 - Senior Landscape Architect.
- 6/2001 - 6/2002 - Associate
- 6/2005 - 1/2014 - Senior Associate.

SOM, London.

- 3/1990 - 10/1995 - Senior Landscape Architect.
- 10/1995 - 9/1998 - Associate.
- 10/1998 - 8/2000 - Associate Director.

BDP, London.

- 8/1986 - 11/1986 - Senior Landscape Architect.
- 11/1986 - 3/1990 - Associate.

MCP, Richmond, Surrey.

- 5/1984 - 8/1986 - Landscape Architect.

Wimpey Group Services.

- 5/1983 - 5/1984 - Landscape Architect.

Paul Temple Ltd.

- 10/1982 - 5/1983 - Landscape Architect



planning



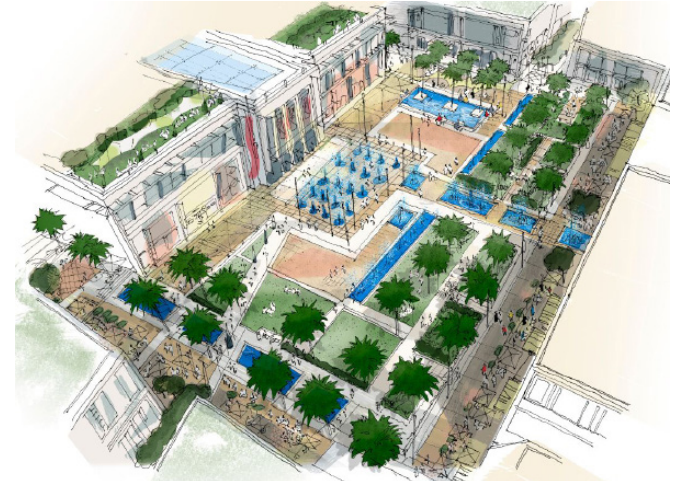
planning

3

New Giza, Cairo, Egypt

Master plan and mixed use development for a 105 hectare new community in New Giza, Cairo, including a new medical campus; retail centre and hotels. The plan also defined a network of landscape spaces and corridors to enhance pedestrian usage of the site and provide green spaces to ameliorate the site.

The various landscape spaces were inspired by historic models with an aim to incorporate '50 Gardens of Giza' into the plan which would bring the rich heritage of Egyptian garden design into residents' everyday experience of their community.



planning 3

Clyde Gateway. Glasgow.

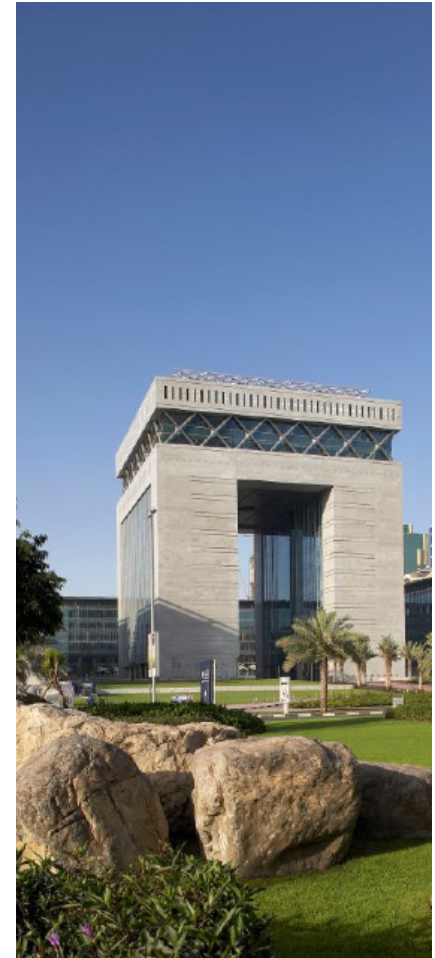
Comprehensive planning study for the 860 hectare Clyde Gateway site to the east of the city centre to establish a 20 year vision for the city by addressing problems of urban dereliction, population growth, site rehabilitation and urban design. As part of this exercise the study proposed a perception-changing strategy of applying for the 2014 Commonwealth Games to attract inward investment and 'market' Glasgow as a renewed modern 21st century city.



planning 3

Dubai International Financial Centre, Dubai, UAE.

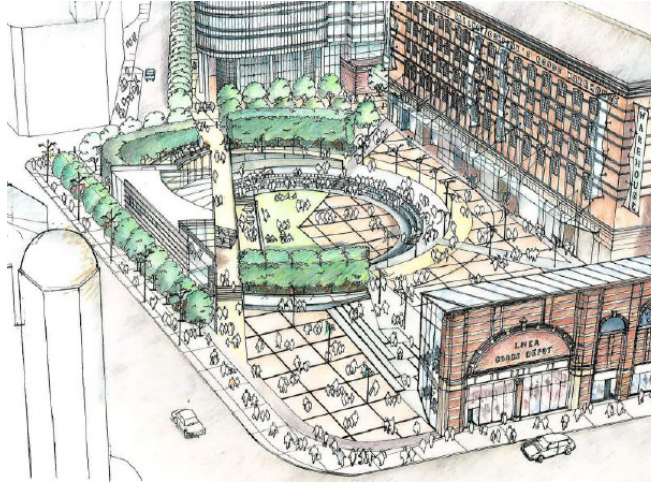
Planning and implementation of the 48 hectare Dubai International Financial Centre to create a mixed-use, walkable piece of City which enables people to work, live and take leisure time in linked, climatically comfortable conditions. The landscape strategy recommended a sequence of boulevards, squares and smaller shaded spaces at a podium level that would connect all the principle buildings and provide identity and orientation.



planning 3

New Petersfield Quarter, Manchester.

Master planning, urban and landscape design and implementation of a new mixed use quarter to the south west of the City centre including a comprehensive re-design of new and existing streetscapes; refurbishment of the existing GMEX centre; and a new 1 hectare Great Northern Square the design of which takes its references from the historic warehouse it frames; the pattern of working waterways in the area; and re-addressing the frontage of Peter Street with a new pavilion.



planning

3

Ibn Hani Resort, Lattakia, Syria.

The 32 hectare master plan created a mixed use development on a site with an earlier master plan, and as such involved the retention of some key elements and the introduction of a more varied brief. A 120 key boutique hotel, 200 serviced apartments and 50 villas formed the main touristic components; whilst a small marina was to become the focus of a mixed use core with shops, galleries, restaurants and a park with native plants.

The plan also retained some important historic buildings which were enveloped by the new park and connected to the hinterland by a series of footpaths and routeways.



3

planning 3

Loutra Resort, Greece.

The master plan called for a careful exercise in building location and landscape design on a highly sensitive coastal site in the south of the country. The brief required around 70 villas to be located with a minimum of disruption on the 40 hectare site with its restored olive terraces, pine woods and compelling views over the Mediterranean from its many and varied slopes.

The design created a series of villages and clusters each grouped around and protecting a particular landscape or topographical feature (forest: meadow; cliff) to help provide a sense of place and character to the properties and the plan and help establish a Loutra-vernacular for the development. At the centre of the community was an 'agora' with shops, cafes, restaurants, parks and gardens; and a large multi function look-out terrace with a stone canopy and tower to literally 'frame the view'.





planning 3

Conference and Leisure Quarter, Blackpool.

The master plan called for a vibrant landmark scheme which would not only accommodate Blackpool's ambition for a new conference centre, casinos and five star hotel; but also create a world class, 'other-worldly' public realm which would provide a stage for a new programme of activities and entertainment in the resort to transform its fading image.

Building on the town's historic past and its location by the sea with its bracing weather, the master plan disposes a series of 'pebbles along a beach' as a motif for the colourful resort; the pebbles being the main casino buildings and entertainment venues, and the beach being represented by a linked swathe of public spaces both indoor and outdoor. The design promoted a group of tall iconic structures to complement the famous Tower, and create a new skyline for a renewed Blackpool.



planning

3

Confidential Project, Adriatic Resort.

The master plan was inspired by the character and vibrancy of its landscape: olives, rocks, lavender, the ocean, pine trees; and incorporated these inspirations into the overall plan. The main hotel building was semi concealed into the rocky landscape and covered by a green roof, and as such it was virtually invisible, whilst giving fantastic views over the bay and the neighbouring islands.

Luxury villas were sited amongst the olive and pine groves; a series of salt water pools were located on the rocky foreshore to create a sculptural sports and relaxation area; whilst in the pine woods a sequence of 'pods' were hung as 'chill-out' zones. A separate village was laid out to the north to act as an attraction to visitors and residents.



planning 3

International Financial Centre Master Plan, St Petersburg, Russia.

This dynamic master plan had a number of key objectives: firstly, to allow a well planned extension of the City for around thirty thousand people together with a commensurate extension of the public transit system together with new Universities and schools. Secondly, the plan allowed for the development of a new all-year round cruise ship terminal with improved facilities and accommodation.

Lastly, and most significantly, the focus of the plan was a new island laid out as a new financial centre to once again give St Petersburg a national significance in Russia's economic life as a new trading hub. The location of the island took advantage of deeper water thereby minimizing excavation for the buildings and their infrastructure; whilst the architectural composition provided a dramatic symbol of the City's renaissance, whilst protecting its historic core.



planning

3

Montrose Resort, Montenegro.

This sensitive and site-specific project grew out of persuading the client of the importance of a thorough understanding of the importance of the site: its character, native vegetation and orientation, situated on a spectacular promontory overlooking the Adriatic. The project focused on creating a new place, called Montrose, to be built using vernacular architectural materials; with the primary emphasis being a carefully considered landscape which protected and enhanced the existing landscape, water table and geology. The main element of the design, which needed to accommodate a hotel, spa, village centre and villas, was to provide the Gardens of Montrose, a botanic treasure which would become a local and regional attraction; housing a concert venue which would become a valuable cultural venue to neighbouring Herzeg Novi.



planning

3

Confidential Site Southend UK

This landscape planning effort required a very site-based approach to situating a residential expansion north of Southend which effectively redrew its green belt boundary. The site planning to create a new settlement for 2000 houses with associated community facilities and schools was based around an armature of landscape elements -swales; streams; hedgerows; woodlands and copses; fields- which gave orientation and character to the various housing offers; whilst at the same time making the site permeable and sustainable.



planning

3

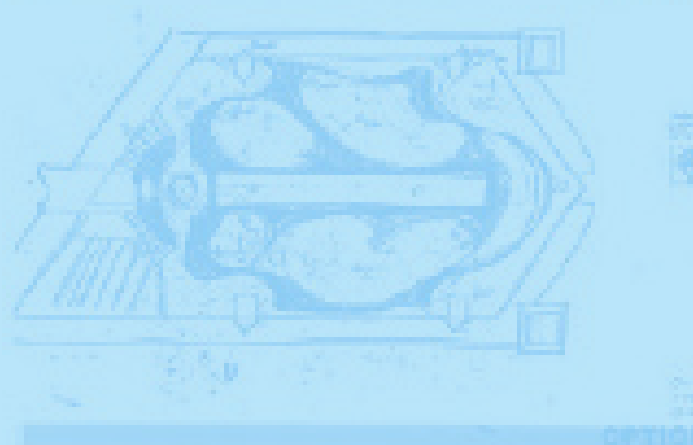
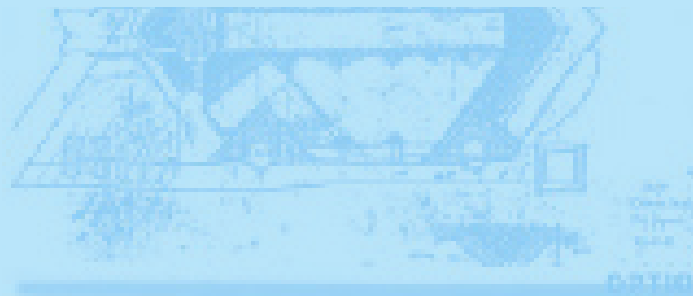
Confidential Red Sea Resort Egypt.

This 1000 hectare master plan for a partially developed site on the Red Sea in Egypt took advantage of dramatic views out to the ocean as well as sunset views to a mountain range to the rear of the site.

Part of the challenge of the master planning exercise was to retain as much of the natural reefs as possible whilst allowing a comprehensive development of the peninsula. Existing hotels and infrastructure also made some design decisions rather sensitive due to phasing requirements of the client. Over 500 residences were planned together with 10 hotels, a workers village, sports facilities, golf course and a marina.



landscape



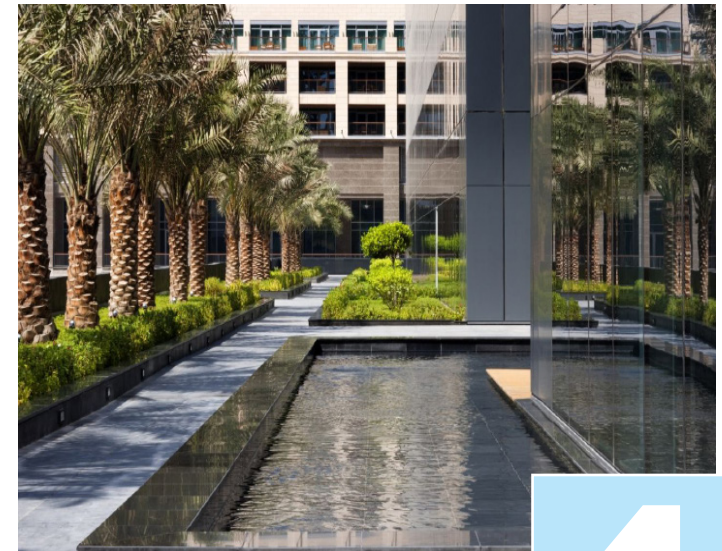
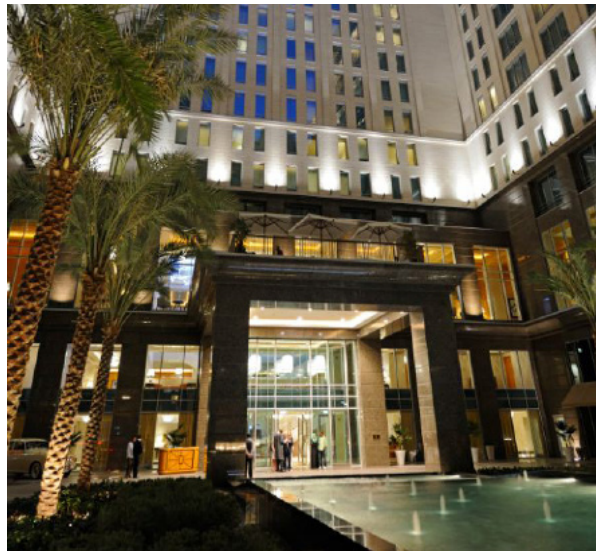
landscape 4

Gardens and roof terraces for Ritz Carlton and Currency House, Dubai, UAE.

As part of the Dubai International Financial Centre development two plots had landscape designs taken through detailed design and construction documentation through to implementation.

One was the Ritz Carlton hotel which involved 1.5-hectares of new terraces and gardens whose formality and structure took their cue from the solid arcaded architecture of the stone building.

The second design, Currency House, was a mixed-use development with commercial, residential and retail uses. The 2-hectare design laid out a series of interconnected pools, palm courts and lawns.



landscape 4

Master plan and landscape infrastructure, Lakeside, Doncaster, UK

A 85 hectare site in South Yorkshire was subject of a master plan which took over a decade to establish. Its primary aim was to reverse a perception of decline and dereliction in the City, as a result of the economic erosion of traditional industries. This resulted in and the need to recalibrate the land uses of a whole eastern section of the City. Previously a waste tip and regional airport, the master plan created a large central lake for recreation; a dramatic wooded hillside made of the re-processed waste tip; and high value sites for business and other commercial uses as well as residences and parks.



landscape 4

One Konoshaya Square, St Petersburg, Russia.

The landscape design in and around this former Imperial stable buildings in the centre of St Petersburg was a highly sensitive intervention that responded to the historic setting of the buildings. The stables were being refurbished as residential units and retail businesses and involved proposing a series of private gardens, more ornate semi private terraces; and a main focus square with water elements and a sculptural glazed staircase to the lower levels and basements.

An area outside the building recommended improvements to the streetscape and public realm including a new square which could accommodate drop off's and terraces to the new retail operations.

The proposals received approval from the City Authorities.



landscape 4

Joseph Banks Building, Kew Gardens, Surrey.

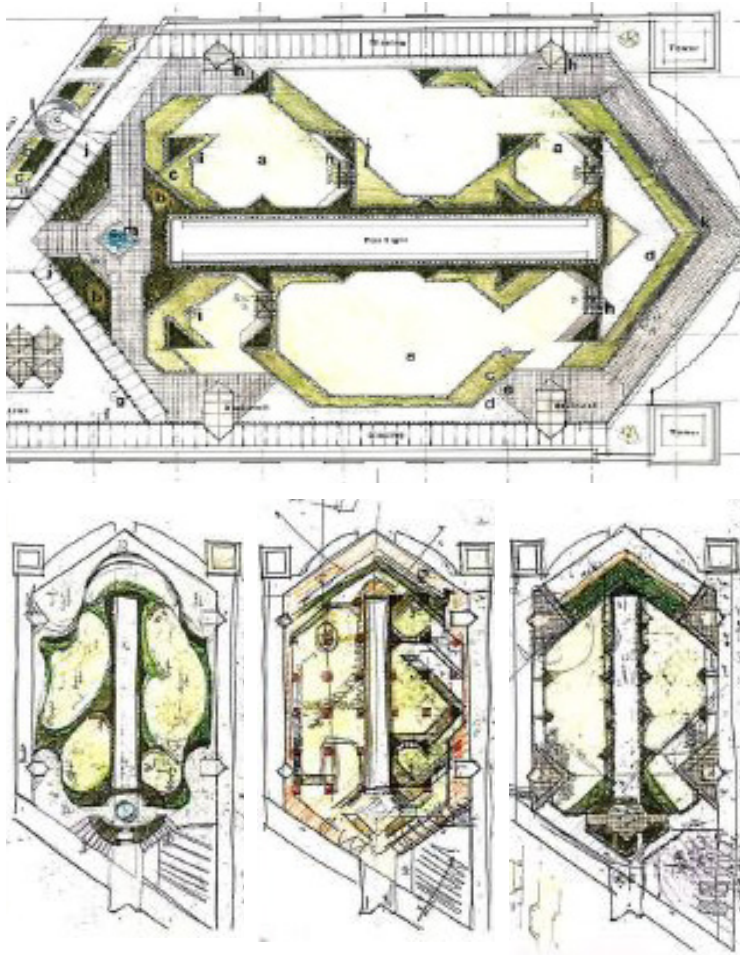
This competition-winning design created a new facility for the Botanic Gardens with a semi-submerged building partially enveloped by its surrounding landscape, centred on a linear glazed atrium, which divided public exhibition space from private study carrels and laboratories. The landscape design embodied a number of important typographies including the 'Elysian Fields' which connect the new building's lake to the 18th century landscapes of Kew Palace; as well as the terraced gardens facing the main building façade which exhibit native plantings, and the Portland stone roof garden with its culinary, medicinal and aromatic plantings.



landscape 4

Roof Garden, Cannon Street Station, London.

The 2-hectare roof gardens provide places of relaxation and entertainment venues in the heart of the City of London. The inspiration for the landscape design was the creation of a sequence of interconnected parterres and colourful gardens which would have the appearance of a rich visual 'tapestry' across the roof when viewed from the neighbouring tall 'atrium' building. Additionally the planting would not impinge the strategic views to St Paul's, which strongly informed the architectural design. The roof gardens had severe loading limitations due to the historic structures and its exposure on the North bank of the Thames meant that the horticultural design had to take into account many factors in its detailed design and implementation. As a result, most of the soft landscape was researched and sourced in the west of Scotland including heathers, grasses, roses and beech and yew hedging.



landscape 4

KAFD Plots 4.05 & 5.01, Riyadh, Saudi Arabia.

These two detailed landscape schemes were incorporated into two plots on the King Abdullah Financial District in Riyadh and were for a hotel and a mixed-use structure.

Plot 5.01 created a strikingly simple stone plaza whose contrasting granite treatment was inspired by the silk textures of local carpets and rugs. The surface was further animated with special lighting, which changed in character as the evening progressed and illuminated different parts of the floorscape, landscape and building.

The hotel plot created secret green 'jewel' in a densely developed part of the master plan as a respite for the guests of the boutique hotel, with a small formal walled garden; a series of terraced gardens which incorporated private dining rooms in their undercrofts; and a two storey water wall which animated the garden whilst providing an ever-changing screen for the conference and function room behind it.



landscape

4

Saphira, Morocco

This planning exercise was aimed at providing a strategy for the regeneration of Rabat's dramatic Atlantic coast and to control uncoordinated development whilst celebrating its history and culture. The carefully located developments (residential, cultural, recreational) reflected facets of the City's gradual expansion along the coastline under different architectural and planning influences (African, French, British). In addition the 200 hectare plan defined and upgraded touristic facilities; enhanced coastal environments; preserved local heritage sites; and most importantly provided a robust public realm where locals can meet and celebrate the coast and city diversity.



landscape 4

Confidential site, Surrey

This planning exercise was aimed at providing a strategy for the expansion of a varied and scattered campus adjacent to Crawley in Surrey. The overall view shown was the central image in a public presentation which was held to convince both the local planning authority and residents that the expansion into brownfield land was a benefit and asset for the town.

The plan was to cater for a population expansion of 3500 persons with new schools and community facilities; together with a new country park and upgraded public footpaths.





landscape 4

Confidential project, Sussex.

The main concept driver for this 140 hectare site was to preserve as much of the historic green belt as possible, and to re-purpose it for future pressures from house building and employment expansion. Historic parkland, hedgerows and forest were all cordoned off and subject to a management strategy; whilst additional landscape measures were proposed to connect all these disparate elements to create a robust and future-proofed 'green-armature'.

New roads and plots were laid out to create three new 'nodes' of development, all connected by efficient public transport routes linking back to the adjacent town.



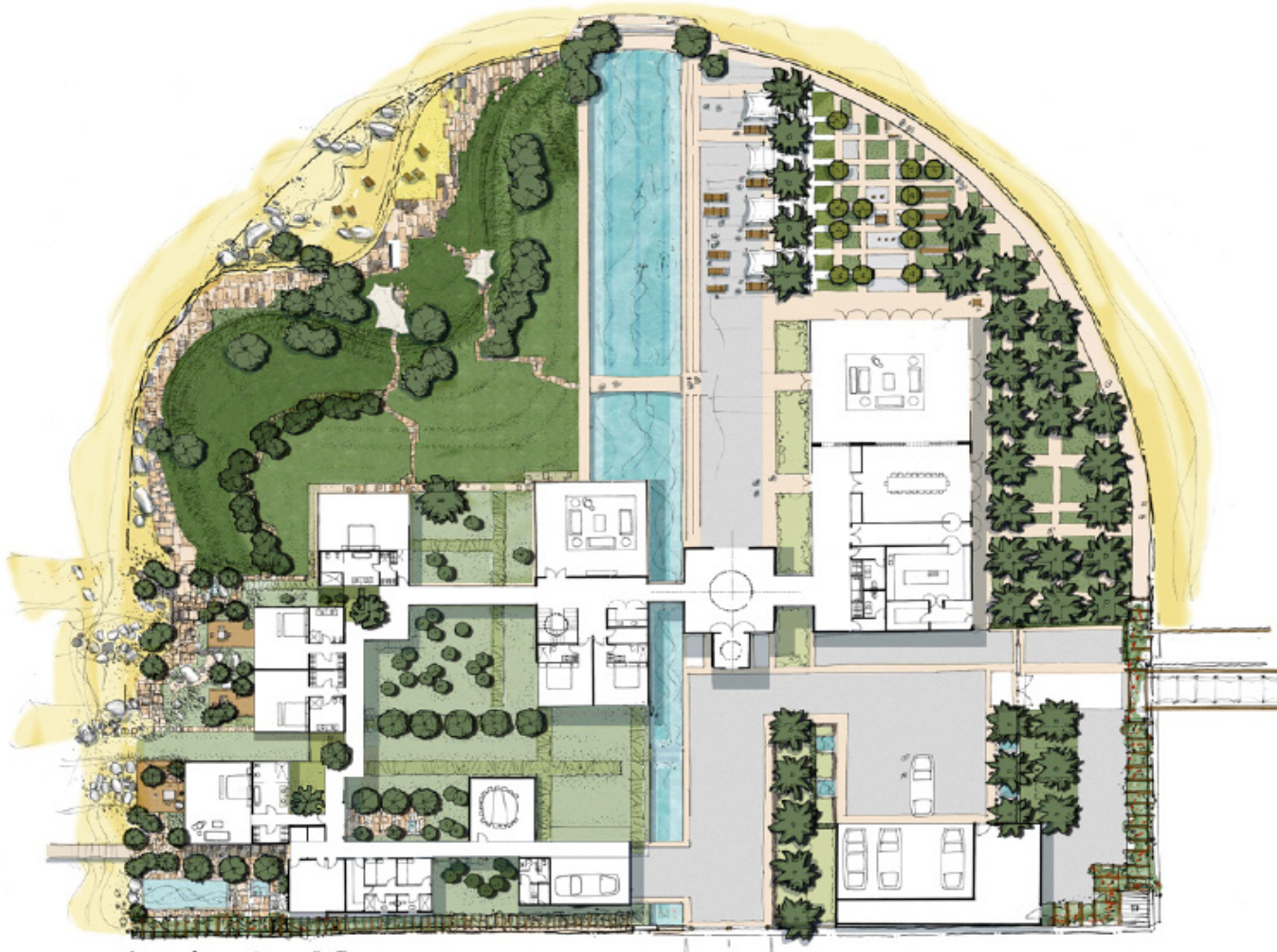
gardens



gardens 5

Private Garden and villa, The Palm, Dubai, UAE.

This high value site was located on the end of one of the Dubai Palm fronds off the shore of the City, and enjoyed dramatic views back to the skyline. The plot itself, at about 3 hectares, enjoyed discreet vehicular access and a small 'coastline', and was intended as a residence for the client as a get-away from business and stress for him and his immediate family. The architecture of the new residence adopted a classically simple arrangement of stone pavilions, pergolas, arcades and gardens all of which created a calm, highly choreographed experience, which melded interior views with views of the garden spaces. The landscape design was focused around a 30 metre swimming pool which acted as a central water spine, off which were laid out a contrasting number of informal and formal gardens which accommodated al fresco dining areas, exercise zones, children's beach and play area, and an arcaded entrance court with outbuildings.



gardens 5

Private Garden, London

This rear garden was a derelict yard before the ambitious design turned the space into a leafy urban 'oasis' with large tree ferns, canna lilies and irises dominating a series of striking white, raised, plant beds which formed the 'backbone' of the garden.

Simple sandstone paving created a clean floor plane, whilst horizontal cedar wood trellis fencing unified both the garden boundary and the summerhouse/ storage shed that occupied the bottom of the garden.



gardens

5

Private Garden, Sussex.

This ambitious garden created a serene outdoor space with stunning views over the South Downs. Indeed one of the major design drivers was to adopt the landscape elements of the rural location and distribute them through the garden.

The garden acts as a green heart which unites the various buildings in the garden whilst enveloping the rooms and views in rich colours and textures with a very English 'cottage-garden' character. Flowering shrubs, fragrant roses and vibrant perennials are arranged around a oval lawn with decorative pools and marginal plants.



5

gardens

5

Private Garden, Castlenau, Barnes, London.

This robust garden design was to cater for a family of very design-savvy individuals who had already completely renovated the house and incorporated a totally transparent rear elevation. The garden therefore had to respond to this bold architectural gesture by making the garden appear to blend seamlessly into the house.

Various concepts were explored inspired by contrasting themes, but the favoured option took its inspiration from 'Fifties' style colour schemes and forms. The garden incorporated a studio room at the rear, a pond and fountain, a lawn for the kids and chill-out pergola for the parents.



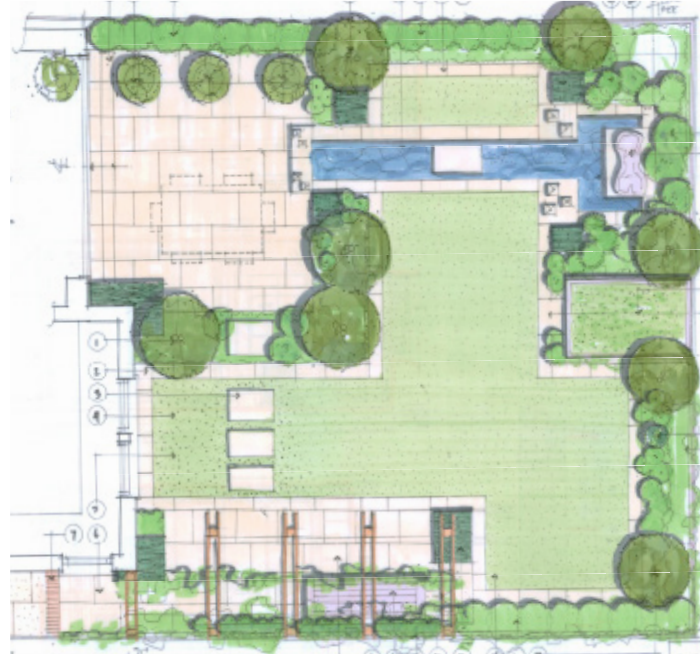
5

gardens 5

Private Garden, Bedford Park, Chiswick, London.

This compact and challenging urban garden was in one of the choicest parts of Bedford Park, the first garden-suburb in London. The house was totally refurbished with an additional light filled extension placed on the rear.

The resultant garden needed to incorporate three features which were much loved by the client: firstly, a large ornamental 'lion' sculpture; secondly, a water rill and fountain to house the client's fish collection; and thirdly, the retention of a large existing lime tree which created a challenge for the remaining garden. As a result, the planting was dominated by tree ferns, small hedges and maples to give the garden a shady yet exotic feel.



gardens

5

Private Garden, Speldhurst, Kent.

This spacious garden design is in a delightful, rural location in Kent overlooking the Weald; and as such, took its design inspirations from the countryside around. The planting used mainly ornamental varieties of the surrounding native trees and shrubs; together with a large wildflower meadow for species diversity.

Human ecology wasn't overlooked either with a pool house and 'stable-like' outbuildings (both new and existing); a new tennis court; a nuttery and pools with waterside planting.



5

gardens

5

Private Garden, Hammersmith, London.

This garden by the Thames presented some unusual problems; it was originally two separate gardens belonging to two separate listed properties along Hammersmith Mall which were carefully joined as a single dwelling. The principle idea was to make the two gardens appear as one (despite a listed garden brick wall) by the disposition of hedges, brick paths and circles; together with substantial shrub planting and espaliered trees.

The terrace by the river was planted with waving grasses and olive trees reflection the movement of the water, as well as taking advantage of the sunny open aspect, ever-changing with the seasons.



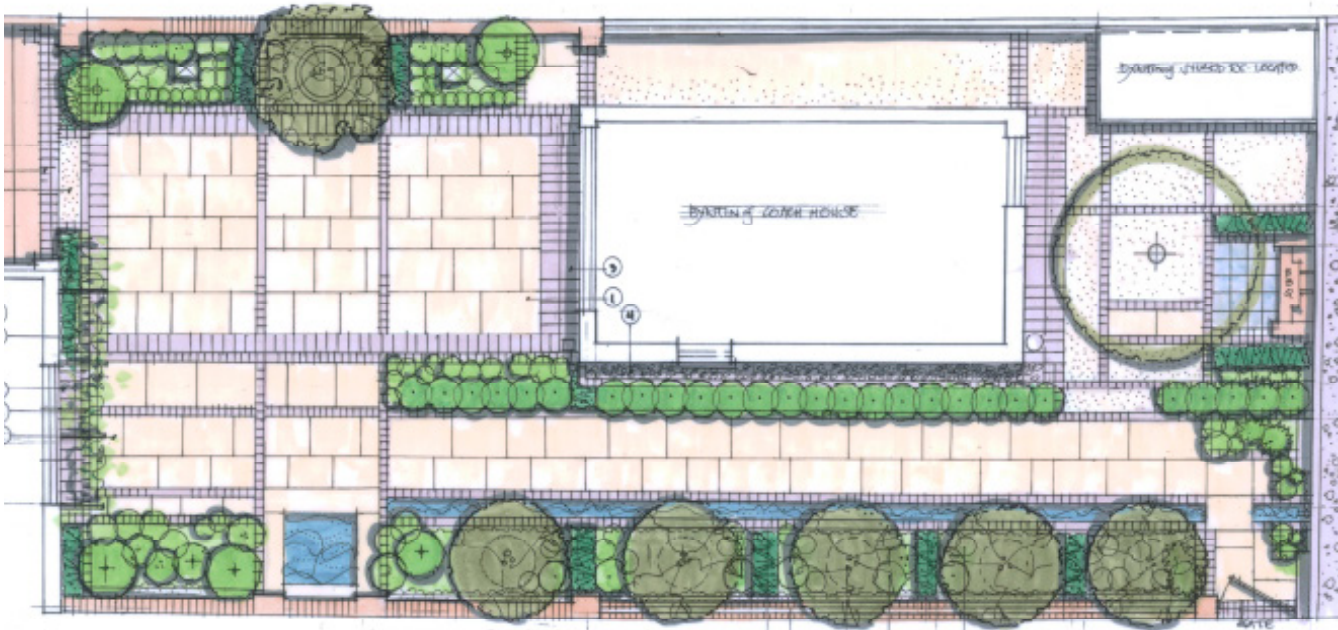
5

gardens 5

Private Garden, North London.

This garden design was a response to some very specific client requirements: namely, a space for events and dining, water, ease of maintenance and a suitable setting for a magnificent listed coach house.

A water rill was created together with a line of Amalanchiers to give spring flowers and autumnal interest to the garden. Additionally a potager took advantage of the south west facing side of the garden; and a large rear retaining wall offered the potential to make an 'Italianate' water source.

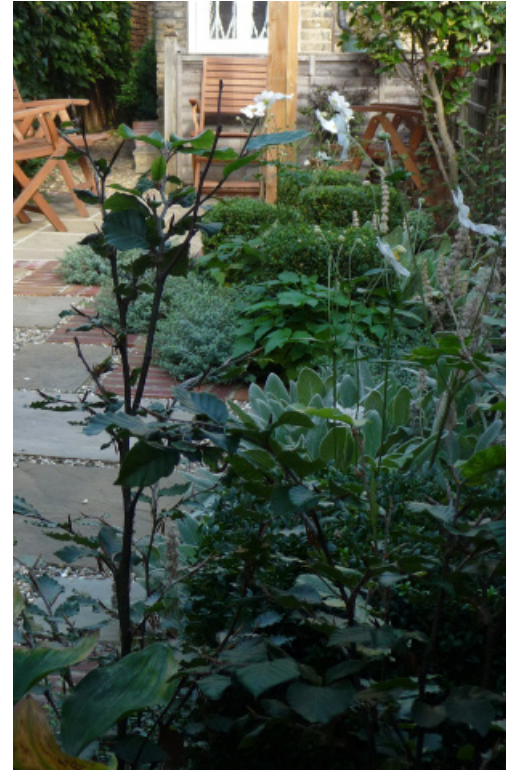


gardens 5

Private Garden, West London.

This garden design responded creatively to a very challenging, linear site. The idea was that the garden transitioned from a formal space (the 'House'), through to a looser space (the 'ante-room'), though to a rear garden (the 'Woodland').

The paving used carefully selected second hand york stone and bricks from a local architectural salvage depot; whilst the pergola used rough Scots pine for a rustic appearance. Planting was inspired by the countryside in Scotland with beech hedging, ferns and dry shade perennials.

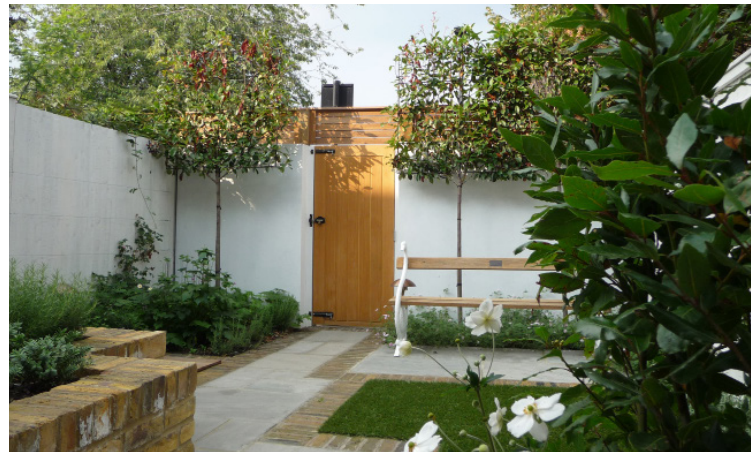


gardens 5

Private Garden, West London.

This small garden created a multi-purpose outdoor space for the occupiers of terraced property in west London. The house itself was very compact and the idea of visually and spiritually connected the 'Inside' to the 'Outside' to make a real outdoor room was a vital design driver.

Although the garden only measured a modest 6 x 9 metres, the design incorporated a lawn, raised seats/ planters, a dining area for four, a herb garden, and a covered sand pit for the young family. The end of the garden was secured using a white rendered wall and a new off-set oak gate together with three pleached Photinia trees. Lighting made the garden space usable for entertaining throughout the year.



gardens

5

Private Garden, Kew, London.

This small sunny garden created a raised terrace overlooking the river and was characterised by an informal arrangement of timber decking, shingle paths and rocks.

The planting is dominated by a large retained fig tree around which the design revolved, together with sweeping bands of grasses and perennials. The river context is reflected in a small terracotta pot with water running down its ridged surface, whilst a sculptural wall mounted barbecue in the shape of a large rivet dominates the house wall evoking the ships' vernacular materials and methods of construction.



5

writing 6

As part of my professional development I have regularly made a point of researching and visiting good examples of landscape design in the UK and Europe as part of writing articles for the professional press and periodicals including:

- Architects Journal.
- Landscape Design.
- Planning Week.
- Planning Exchange.
- Horticulture Week.

I also undertook a tour of the Netherlands in order to assess that country's apparent flair for the design and management of their landscapes which covered park and open space design; Dutch landscape architecture; and the nursery industry.



GREEN ENERGY

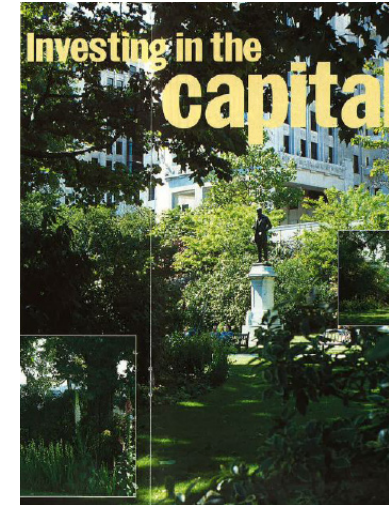
The World Horticultural Expo Floriade 2012 in Venlo, Netherlands, reveals the potential for green infrastructure to reshape the way we live today, writes *Peter Sheard*

The Critics



Blumen marvellous

Since 1951 Germany's Biennial garden festival has left lasting impacts on its respective host cities. *Peter Sheard* reports back from this year's 'Blumengartenstadt' in Kallun, and argues that the German approach provides a useful model for the UK to follow



aj review



Town and country

PETER SHEARD

KA 3000: The International Horticultural Exhibition, Nuremberg, Germany
until 19th October 2009

Education & Background:

Chartered Member of the Landscape Institute 2006.
Elected Member of the Landscape Institute 1986.

Scholarship.

September 1981.

I undertook a tour of the Netherlands in order to assess the country's apparent flair in the design and management of their landscapes, and involved the submission of a 2000 word report, which covered park design; Dutch landscape architecture; and investigated three nurseries.

Experience:

Gensler, London.

August 2000 - January 2014.

This position in the World's largest design Firm defined my commitment to using landscape architecture to define and inform both mixed-use master plans, as well as architectural projects in a multi disciplinary environment. I became a leading proponent of how to both run master planning projects and co-ordinate the multiplicity of disciplines; as well as helping grow the planning and landscape group to 25 staff. My work took place all over Europe, the UK and the Middle East; and my role as a mentor and expert within the Firm helped me contribute to growing the overall planning and landscape architectural capacity within Gensler. Projects included:

Master Planning:

- Planning and implementation of the 48 hectare Dubai International Financial Centre, UAE, a mixed use, walkable centre to reflect Dubai's increased regional financial importance.
- Mixed use master plan for a new 105-hectare community in New Giza west of Cairo together with detail design of the new medical campus and University.
- Comprehensive planning study for the 860 hectare Clyde Gateway site to the east of Glasgow city centre to establish a 20 year vision for the city.
- Master planning for the new Conference and Leisure Quarter in Blackpool including a new urban plan for 10 hectares of the seafront reflecting the Town's vibrant history.
- Master planning and landscape strategy for a 130-hectare extension to the TU Delft in the Netherlands.
- Leisure and hospitality master plans for developments in Lattakia, Syria; Cesme Turkey; and Montenegro.

Landscape Architecture:

- Detailed design and implementation of gardens and roof terraces for the Ritz Carlton Hotel (1.5 hectares), and Currency House office (2 hectares), both part of the DIFC master plan, Dubai, UAE.
- Detailed design and implementation of parking, sustainable drainage strategies and planting for 5-hectare site for Herman Miller HQ at Chippenham, Wilts.
- Landscape design for new courtyards, access and street refurbishment for an 8-hectare site at the historic imperial stables in St Petersburg, Russia.
- Landscape planning for 8 'Building Schools for the Future' sites in Kent; and the landscape design and implementation of two schools in Nottinghamshire.

Skidmore, Owings and Merrill Inc (SOM), London.

March 1990 - August 2000.

This position at this prestigious Firm was very much attuned to my core interest as a landscape architect, that of providing design direction on the initial, conceptual master planning of a site. As such this role involved projects of greater scale and complexity necessitating site assessments; feasibility studies; and brief formulation to produce comprehensive and flexible master plans.

- Strategic master plan for Liverpool addressing issues of economic and urban renewal including the proposal that the city become European Capital of Culture.
- Master planning, urban design and implementation of the Petersfield Quarter in Manchester including the landscape design for the 1 hectare Great Northern Square and roof gardens to the GMEX Conference Centre.
- Master planning and landscape design for a mixed use development at Doncaster, Yorkshire including a 25 hectare lake, land reclamation and a new wetland park for the Borough Council.
- Master planning for a 850 hectare mixed use development for BT near Rugby, site including new housing, distribution, open space and leisure provision.
- Landscape design and implementation of multi purpose pavilion at Lisbon Expo 1998.
- Landscape design and implementation of roof gardens and entry driveway to Conrad hotel in Cairo, Egypt.

Building Design Partnership (BDP), London.

August 1986 - March 1990 - Associate.

This position involved much more multi disciplinary working with a wider range of consultants on bigger more expensive projects: additionally my position as Associate required the co-ordination of seven members of staff together with the associated fee agreements and resourcing. Responsibilities ranged from presentation and design information; production information; and contract administration thereby developing my experience across all the work stages. Projects included:

- Nearly 10,000 square metres of hard landscape pedestrianization works at Southend, Essex.
- Detail design and implementation of a 4-hectare roof garden at Cannon Bridge, London.
- Extensive landscape proposals for a 20-hectare college for Allied Dunbar at Swindon, Wilts.

M.C.P., Richmond, Surrey.

May 1984 - August 1986 - Landscape Architect.

This position involved working in-house architectural projects as well as projects of a purely landscape architectural nature. The scope of services ranged from surveys, contract drawings, supervision of works, and consultancy, widening my experience of Contracts and bringing me into contact with a wide range of sub-consultants. Projects included:

- Design and implementation of landscape scheme on and around the Joseph Banks Building, Kew Gardens.
- Landscape management studies for the 'National Trust' including Lacock Abbey; Studland's Peninsula and Kingston Village, Dorset.

Wimpey Group Services, London.

May 1983 - May 1984 - Landscape Architect.

At this Firm, I was engaged in the production of landscape proposals within and around numerous residential schemes throughout southern and eastern England, working with architects, planning authorities, engineers and surveyors.

- Locations include London, Cambridge and Oxford; with sites averaging 15 hectares, around 200 units.

Paul Temple Ltd; London.

October 1982 - May 1983 - Landscape Designer.

This company specialized in design-and-build projects of various scales and complexity in London and the southeast. The exact nature of my task depended on whether the work was being carried out with contractors, architects or direct with clients. Projects included:

- Interior atrium scheme for a hotel in Ireland first exhibited at Chelsea Flower Show.
- Numerous private gardens including a summer retreat for the Marquis of Bute, London.

Writing, Lectures & Teaching:

As part of my professional development I have regularly made a point of researching and visiting good examples of landscape design and planning; and have published articles in numerous periodicals including Architects Journal; Planning Week; Planning Exchange; and Landscape Design.

I have also carried out book and event reviews for World Architecture News (WAN) including Paris's 'Cite Nature' and 'The Architect' by Charles Bancroft.

Lectures.

I have also been invited to adjudicate three times from 2008 to 2012 on the WAN Urban Design Panel. I have given addresses to the Thames Gateway Initiative Conference on the subject of 'Open Spaces as the Focus for Regeneration' (1998) covering a range of regeneration projects carried out at SOM including Doncaster, Rugby and Liverpool; and I spoke at the Liverpool Waterfront Expo citing Gensler's projects in Blackpool, Rabat and Abu Dhabi (2009).

Teaching.

I have been a lecturing professor at the University of Hawaii School of Architecture during 2009 helping to guide the efforts of about 20 first and second year students with their urban design modules: this involved presentations and lectures on landscape architecture and history; urban design; and master planning; attended group crits with a variety of professors of the University; and helped with one-to-one design reviews and workshops. I am also actively involved with London Metropolitan University in East London and Central Saint Martin's University by attending various crits and carrying out intensive one-to-one mentoring with students.

history 7

contact details:

(m): 07722 59 13 16

(e): psheard@virginmedia.com

